

JEEPSWAG

Jeep JK Hood Hold-Down Kit Installation Instructions

Your new Hood Hold-Down Kit is manufactured of Stainless Steel. Painting for reasons of providing rust protection is not required. The Zip-Ties are Re-Usable. Press the tab on the head to open.

Kit Contents:

(1) Square Stainless Steel Tube

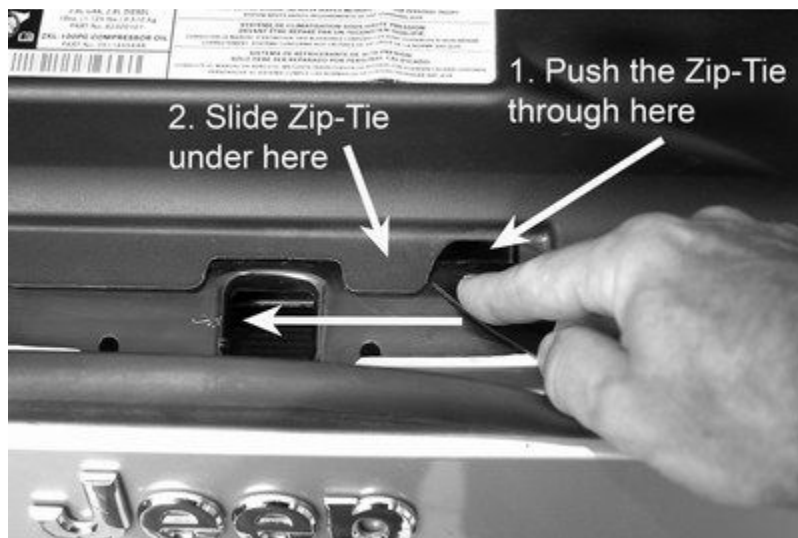
(1) Heavy-duty Re-Usable Zip-Tie

Tools Required:

Pair of Pliers

Something that will cut a Zip-Tie

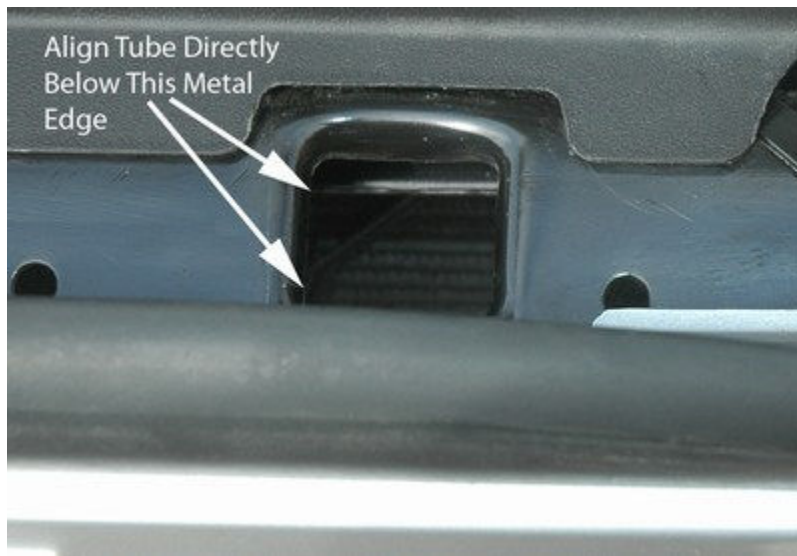
1. Push the small end of the Zip-Tie through the hole and slide the Zip-Tie to passenger side of the latch hole as indicated in picture:



2. Thread the Zip-Tie through the metal tube, as indicated in picture:



3. Firm up the Zip-Tie making sure that the metal tube is aligned with the metal edge as indicated in the picture:



4. With pliers and cutters, tighten and trim the Zip-Tie



Write-Ups, reviews and all posts on forums are greatly appreciated.

Thanks,

Brett -
Phone: (626)TRAILS1 - (626) 872-4571
Brett@JeepSWAG.com

